

## PHILOSOPHY

We believe that the nursing home experience should be a positive one...one filled with care, compassion and comfort.

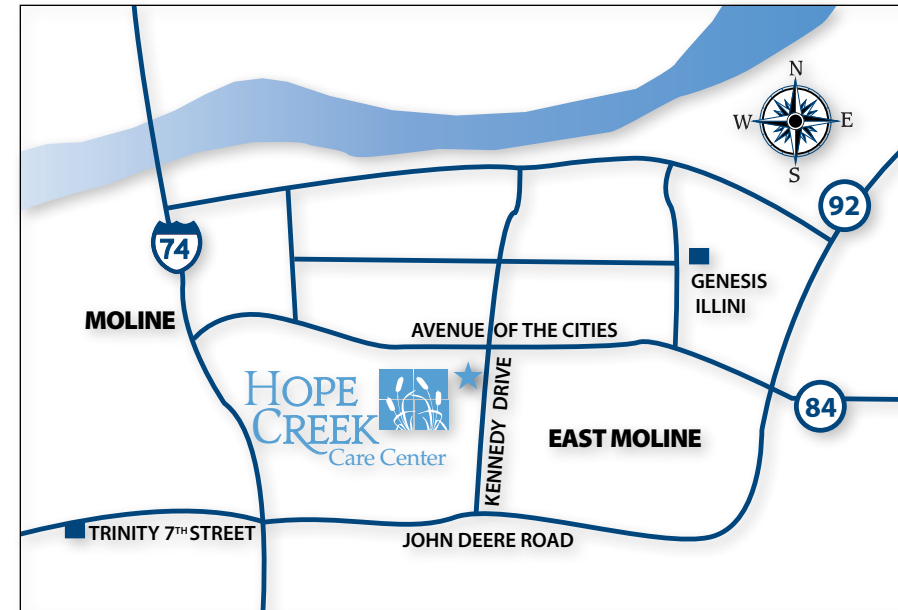
It is our goal to provide quality care in a homelike setting that allows the resident to be his/her own person with the encouragement to reach their maximum potential.

We are dedicated to the philosophy:

"To help our residents do as much as they can, as well as they can, for as long as they can."

With this philosophy, our belief is to "Add LIFE to their YEARS, and not just YEARS to their LIFE."

CARE  
COMPASSION  
COMFORT



## CONVENIENT LOCATION

Hope Creek is located on the border of Moline and East Moline, just south of Avenue of the Cities. Genesis Medical Center's Illini Campus is just 5 minutes away and Trinity's 7th Street Campus is 10 minutes from Hope Creek. Admissions are allowed 24 hrs/day, 7 days/week.



(309) 796-6600 [www.hopecreekcare.com](http://www.hopecreekcare.com) 4343 Kennedy Drive, East Moline



# FOCUSED ON YOUR HEALTH



As a skilled nursing facility, Hope Creek offers a range of care for short and long-term residents. Spacious rooms, on-site rehabilitation services and friendly staff make Hope Creek feel like home to our 245 residents. Our safe, comfortable environment promotes healing, allowing residents to regain their independence and return to the community when able.

Our new facility is situated on 12 acres in a park like setting in a location that's convenient for visits from doctors and loved ones. Find a new place to call home at Hope Creek.

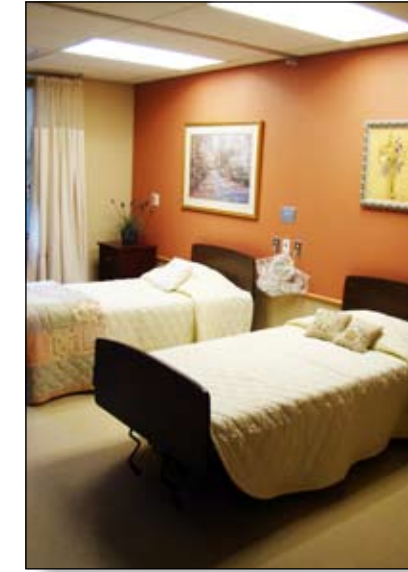


Our admissions coordinator can help you navigate Medicare regulations and make the transition to living at Hope Creek an easy one. Payment options include private pay, Medicare Parts A and B, Medicaid, insurance, workers' comp and VA contracts.

## CARE COMPASSION COMFORT

### AMENITIES

- On-site vision care
- Salon/Barber Shop
- Chapel
- Courtyard garden
- Common areas for gathering
- Activities
- Meals with family
- Emergency call system
- Pharmacy services
- Visiting pet therapy
- Therapeutic and specialized dietary services
- Restorative nursing
- Occupational, Physical, and Speech therapy
- Phone lines available in each room
- Cable television available
- Respite and hospice care



DISCOVER  
A NEW PLACE  
TO CALL HOME.

Hope Creek Care Center is here when your family needs long or short-term skilled nursing care or rehabilitation. Our doors are open to all, with no restrictions on city of residence or income.

Come see our new facility! Call (309) 796-6600 to schedule a personal tour and meet our compassionate staff. Find out more at [www.hopecreekcare.com](http://www.hopecreekcare.com).



Bookmark compliments of Hope Creek

# WELCOME

CARE  
COMPASSION  
COMFORT

